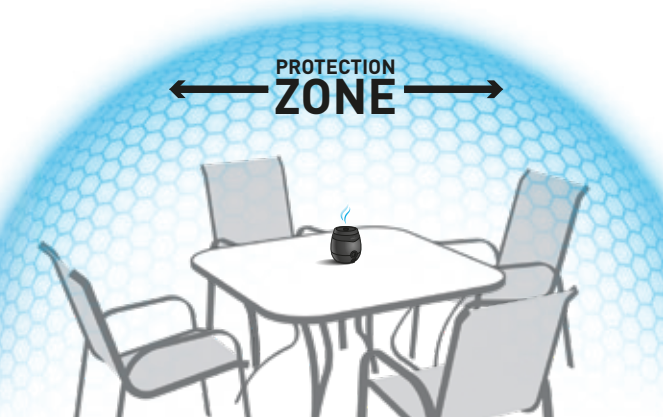


Welcome to Thermacell

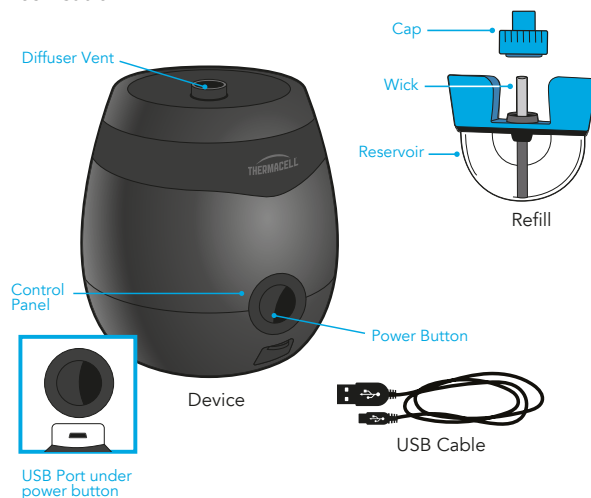
You're ready to discover a better way to repel mosquitoes. Thermacell products create a zone of protection from mosquitoes, without the use of messy sprays or lotions. Thermacell patented technology uses heat to release repellent continuously, providing hours of protection.

Turn it on and within 15 minutes you will be protected from mosquitoes in the surrounding area. Up to a 6m diameter.



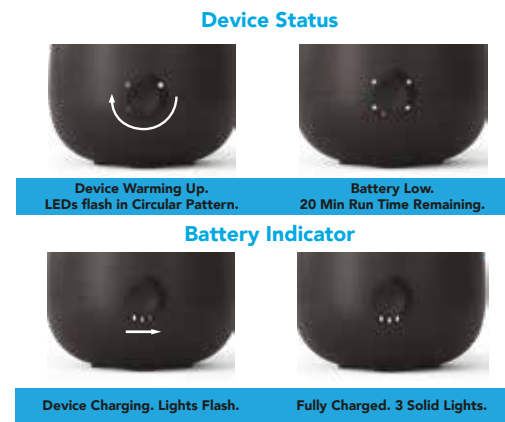
In the Box

- 1 Thermacell Repeller
- 1 Thermacell Repellent - 12 Hour Refill cartridge
- 1 USB Cable



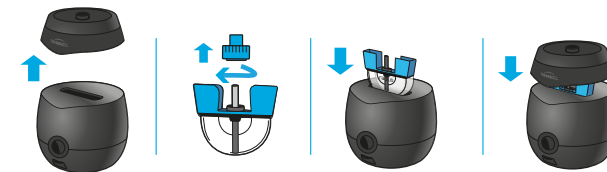
1. Let's get started

Your THMRE55 device has a rechargeable battery. Fully charge the repeller before first use. To charge the battery pull away charge port cover to expose the USB charging port located on the front of the device. Insert the USB cable provided with the device. The battery indicator is located below the power button.



2. Inserting a Refill

- Remove top from device: To remove the top grasp the THMRE55 device base with one hand and remove the top with the other.
- Remove the cap from a cartridge.
- Insert the cartridge into the repeller
- Replace the THMRE55 device top taking care not to damage the Refill wick. The device uses magnets to hold the top to the bottom of the device.



Use only Thermacell Refills.

3. Using the repeller

- Press the power button to turn ON.
- Light will illuminate when turned on.
- Place the repeller in center of area where mosquito protection is desired and run the repeller for 15 minutes to establish the protection zone.
- The 3.3 mL cartridge will last 12 hours.
- Only use outdoors. Do not cover. Keep repeller upright during use.
- To turn off, press the power button for 1 second until the light turns off.



Useful Tips

- For best results, place in the center of the area you want to protect from mosquitoes.
- Allow 15 minutes for the full protection zone to be established.
- For optimal protection in larger areas, use multiple repellers spaced 3-4 metres apart.
- Effectiveness can be impacted by wind and air movement. Place upwind on a windy day.
- Avoid exposing open refills or device to rain.
- The refill wick will get hot while in use. Always allow to cool before handling.
- Do not attempt to touch, break, or remove the refill wick.
- Only use Thermacell Zone refills in this device.
- Do not use or leave in direct sunlight, rain, or extremely hot or cold conditions.



Maintenance

- Condensation can build up on and around the top over time. Turn repeller off and wipe with a damp cloth. Do not use chemicals or abrasives.
- Replace cap on cartridge and store in a dry place when not using the repeller.
- Partially used cartridges should be removed from the device and capped or disposed of prior to storing for extended periods of time.
- Do not leave repeller outside when not in use. Store in a cool dry place.

Batteries should be charged at least once every 3 months during storage.

Troubleshooting

1. If the repeller won't turn on:
 - Check that the top of the repeller is properly seated on the base. The repeller will not operate if top and bottom are separated.
 - Charge the battery. The repeller will not turn on if battery is too low.
2. If you are still bothered by mosquitoes after 15 minutes:
 - Check that the device is on. Light ring should be illuminated.
 - Confirm a cartridge is inserted and cartridge has repellent.
 - Make sure the wick is not damaged or missing.
 - Be sure the repeller is [within] 3-4 metres from you.
 - Allow the device to run for up to 15 minutes.
 - Call or email customer service if you still experience problems using your repeller.

Thermacell Repellents, Inc
26 Crosby Drive
Bedford MA 01730 USA

DISTRIBUTED BY
Mayo Hardware Pty Ltd
4 Secombe Place Moorebank NSW 2170
Customer Service: 1300 360 211
www.thermacellrepellents.com.au

Mayo Hardware will honour all statutory guarantees that this product is of acceptable quality. (including that it is fit for purpose).

POISON
KEEP OUT OF REACH OF CHILDREN
READ SAFETY DIRECTIONS BEFORE OPENING OR USING


THERMACELL®

ZONE MOSQUITO REPELLENT

ACTIVE CONSTITUENT: 43.8 g/L METOFLUTHRIN

E-Series
USER GUIDE



IMPORTANT: READ ALL INSTRUCTIONS BEFORE USE



**IMPORTANT:
READ ALL INSTRUCTIONS BEFORE USE**

ATTENTION: This product is intended for adult use only. This product is not a toy.

IMPORTANT SAFETY INFORMATION. READ CAREFULLY BEFORE USE.

NOTICE: This product contains a lithium ion battery which is subject to certain transport restrictions. Inspect the product's packaging prior to transport. Do not transport this product if the component housing the battery is damaged.

When using rechargeable battery operated products, basic precautions should always be taken.

To reduce the risk of injury, close supervision is necessary when a product is used near children.

KEEP OUT OF REACH OF CHILDREN

This appliance is not intended for use by persons (including children) with reduced physical, sensory or mental capabilities, or lack of experience and knowledge, unless they have been given supervision or instruction concerning use of the appliance by a person responsible for their safety.

DO NOT put fingers, hands, metal or other foreign objects in the product.

Do not remove the battery from the equipment housing. Do not store with battery completely discharged for extended periods of time. Batteries should be charged at least once every 3 months during storage. Battery should be discharged and charged after being stored more than a year to maintain optimal battery capacity. The battery should be stored at room temperature in a dry location and should not be placed, charged or stored in high-temperature locations. Exposure of the battery or device to fire or temperature above 130°C/265°F may cause explosion.

Charging should be performed at a temperature between 40 °F (5°C) and 110 °F (40°C). Charging improperly or at temperatures outside of the specified range may damage the battery and increase the risk of fire. Recharge only with a USB Listed/Certified Class 2 Power unit charger marked 5V DC-1000 mA, do not exceed 5V DC. This appliance contains batteries that are non-replaceable.

If any leaks, odors, or deformities are noticed in the structure housing the battery, immediately discontinue use and dispose of safely.

Do not expose the device to water or otherwise allow the device to get wet.

**PRECAUTIONS
KEEP OUT OF REACH OF CHILDREN
AND PETS.**

For outdoor use as an insect repellent only. Do not use indoors, in tents or any enclosed area. Do not touch while the device is in use. Do not insert anything other than Thermacell® refill into the device. Place device on a flat, stable surface, facing upward. Do not cover with any material while in use. Clean with a damp cloth only when the device is inactive. Wash hands after use.

CAUTION

Toxic to aquatic life. DO NOT allow chemical, containers, refills or vapour to get into drains, sewers, streams or ponds. Toxic to bees. However, the use of this product as directed is not expected to have adverse effects on bees.

STORAGE AND DISPOSAL

Store in the closed, original container in a cool, dry place out of reach of children. Do not store in direct sunlight. Store unused refills in original packaging in a cool, dry place inaccessible to children and pets. Wrap used refill and place in garbage. Do not incinerate refill.

Do not discard this product as household waste. The Thermacell contains Lithium-Ion batteries. Please safely dispose the product.



SAFETY DIRECTIONS

Harmful if inhaled. May irritate the eyes and skin. Avoid contact with eyes and skin. Do not inhale vapour. Wash hands after use.

FIRST AID

If poisoning occurs, contact a doctor or Poisons Information Centre, Phone Australia 131 126; New Zealand 0800 764766. If swallowed, do NOT induce vomiting.

For further product information contact Mayo Hardware 1300 360 211

APVMA Approval No.: 89453/124940

USE ONLY Thermacell Zone Refills. Thermacell will not be responsible for damage, injury or poor product performance caused by use of any other refills or unapproved replacement parts in this Thermacell device.